

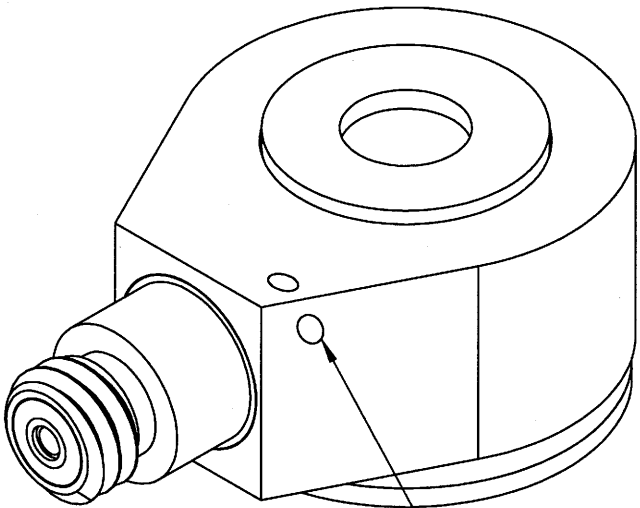
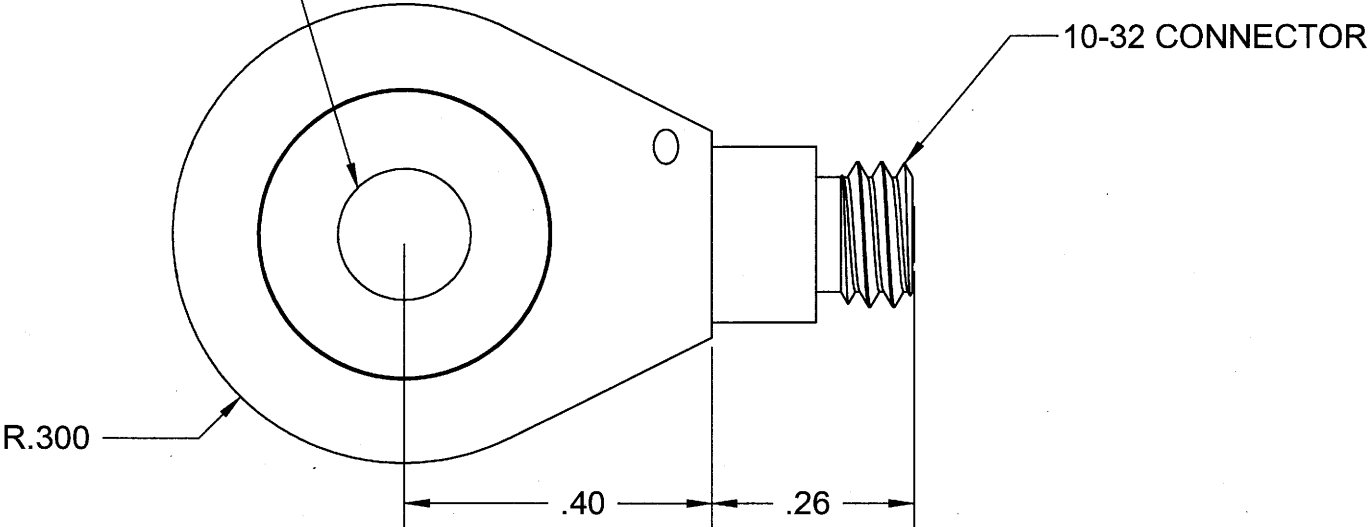
PROPRIETARY AND CONFIDENTIAL

THE INFORMATION CONTAINED IN THIS DRAWING IS THE SOLE PROPERTY OF DYTRAN INSTRUMENTS INC. ANY REPRODUCTION IN PART OR AS A WHOLE WITHOUT THE WRITTEN PERMISSION OF DYTRAN INSTRUMENTS INC. IS PROHIBITED

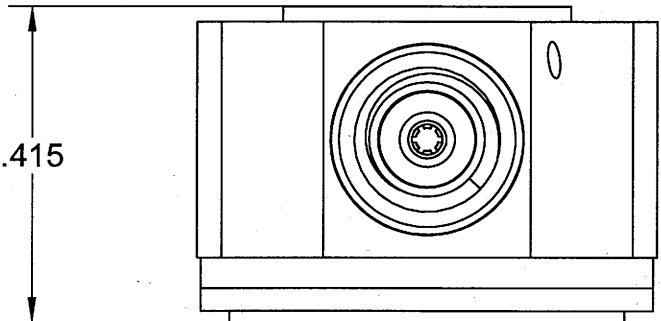
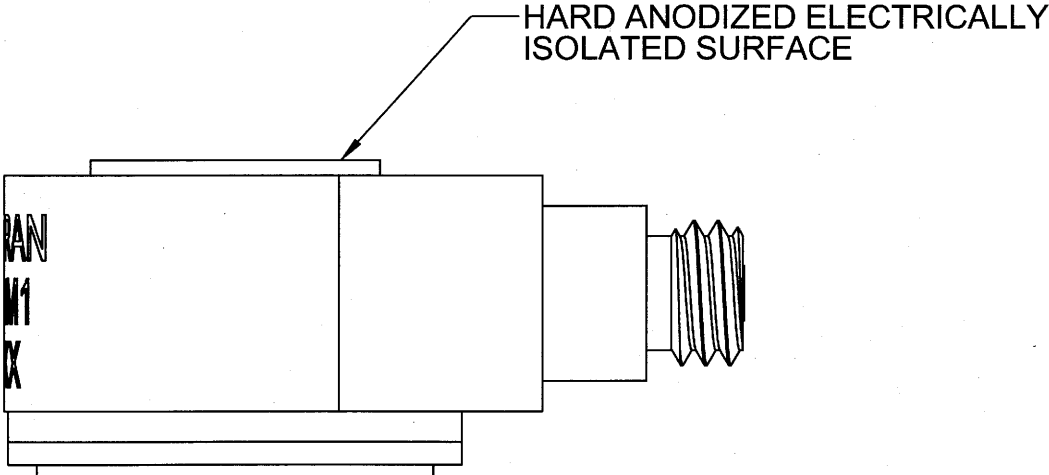
DWG NO 127-3215M1 SH 1 REV A

REVISIONS					
REV.	ECN	DESCRIPTION	BY/DATE	CHK	APPR
A	5146	INITIAL RELEASE	JS 04/04/08	CS	D.V.

Ø.19, # 10 CLEARANCE



Ø.037 SAFETY WIRE HOLE




HARD ANODIZED ELECTRICALLY ISOLATED SURFACE

1. TORQUE MOUNTING SCREW (SHCS 10-32 X .63 LG) TO 12-15 LBS IN.

NOTES: UNLESS OTHERWISE SPECIFIED

DRILL HOLE SIZE	TOLERANCE	UNLESS OTHERWISE SPECIFIED: INTERPRET DIM & TOL PER ASME Y14.5M - 1994. REMOVE BURRS. COUNTERSINK INTERNAL THDS 90° TO MAJOR DIA. CHAM EXT THDS 45° TO MINOR DIA. THD LENGTHS AND DEPTHS ARE FOR MIN FULL THDS. THDS PER MIL-S-7742. DIMENSIONS APPLY AFTER FINISHING ALL MACHINED SURFACES. ⁶³ / ₁₆ TOTAL RUNOUT WITHIN .005. BREAK SHARP EDGES .005 TO .010. MACHINED FILLET RADII .005 TO .015. WELDING SYMBOLS PER AWS A2.4. ABBREVIATIONS PER MIL-STD-12.
.0135 THRU .125	+.004 / -.001	
.1260 THRU .250	+.005 / -.001	
.2510 THRU .500	+.006 / -.001	
.5010 THRU .750	+.008 / -.001	
.7510 THRU 1.000	+.010 / -.001	
1.001 THRU 2.000	+.012 / -.001	

THIRD ANGLE PROJECTION
USA

UNLESS OTHERWISE SPECIFIED: DIMENSIONS ARE IN INCHES. TOLERANCES ARE: DECIMALS .XX ± .010 .XXX ± .005 ANGLES ±1°		CONTRACT NO.		<div>DYTRAN INSTRUMENTS, INC. Chatsworth, CA</div> <div>MASTER ONLY IF IN RED</div>					
MATERIAL:		APPROVALS		DATE		TITLE: OUTLINE DRAWING MODEL 3215M1			
		ORIG	JS	04/03/08					
FINISH:		CHK	CS	1.8.8					
		APP	D.V.	4.8.8					
DO NOT SCALE DRAWING		APP				SIZE B	CAGE CODE 2W033	DWG NO 127-3215M1	REV A
						SCALE: 2:1		SOLIDWORKS	

SPECIFICATIONS, MODEL 3215M1 IEPE ACCELEROMETER

SPECIFICATION	VALUE	UNITS
SENSITIVITY, $\pm 5\%$	10	mV/g
RANGE, FULL SCALE	± 500	gpk
FREQUENCY RANGE, $\pm 5\%$	1 TO 20000	Hz
RESONANCE FREQUENCY, NOM	50	kHz
DISCHARGE TIME CONSTANT, NOM.	0.5	sec
LOW FREQUENCY -3db POINT, NOM.	0.3	Hz
LOW FREQUENCY -5% POINT	0.9	Hz
LINEARITY [1]	± 1	% F.S.
TRANSVERSE SENSITIVITY, MAXIMUM	5	%
OUTPUT IMPEDANCE, NOM.	120	Ω
OUTPUT VOLTAGE BIAS	7.5 to 9.5	VDC
ELECTRICAL NOISE	.002	g
SUPPLY CURRENT RANGE [2]	2 to 20	mA
COMPLIANCE (SUPPLY) VOLTAGE RANGE [4]	+15 to +24	VDC
OPERATING TEMPERATURE RANGE	-60 to +300	$^{\circ}\text{F}$
SIZE (DIA x HEIGHT)	0.6 x 0.42	inch
WEIGHT	10	grams
MAXIMUM SHOCK	5000	gpk
CONNECTOR, SIDE MOUNTED	10-32 COAXIAL	
MATERIAL, HOUSING/CONNECTOR	TITANIUM ALLOY	
MOUNTING PROVISION	THRU HOLE FOR 10-32 THREAD SCREW	
ENVIRONMENTAL SEAL	HERMETIC	
ISOLATION, CASE TO MOUNTING SURFACE, MIN	10	M Ω

[1] Percent of full scale or any lesser designated full scale range, zero-based best fit straight line method.

[2] Power only with Dytran or Dytran approved current source type power unit. Do not supply power without current limiting. You will destroy the integral electronics. This will void the warranty.



21592 Marilla Street, Chatsworth, California 91311 • Phone: 818.700.7818 • Fax: 818.700.7880
www.dytran.com • For permission to reprint this content, please contact info@dytran.com