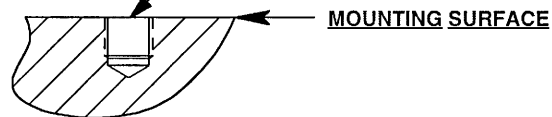
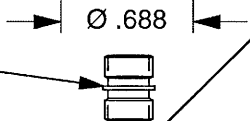
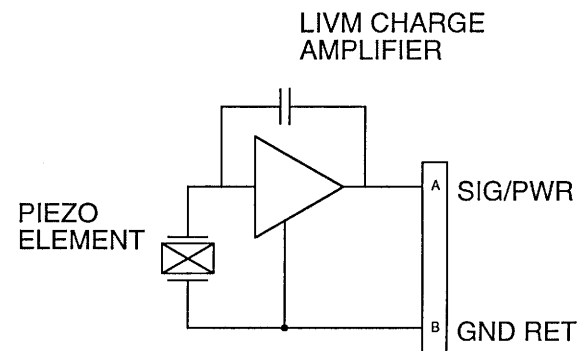


6176 MOUNTING STUD (SUPPLIED)



**MOUNTING PREPARATION**  
 PREPARE FLAT SURFACE (TO .001 TIR)  
 NEXT DRILL #3 (.213) DIA X .250 DEEP  
 BOTTOM TAP 1/4-28 UNF-2B X .200 MIN  
 THREAD DEPTH



1. WEIGHT - 107 GRAMS. (A)

EXCEPT AS OTHERWISE NOTED  
 ALL DIMENSIONS IN INCHES  
 TOLERANCE: .XXX = ± .005 .XX = ± .01  
 SURFACE FINISH EXCEPT AS NOTED ✓  
 BREAK EDGES TO DEBURR RADIUS OR CHAMFER  
 THESE DIAS (C) TO T.I.R.  
 FILLETS - MAX RAD.

		CHATSWORTH, CA.			
		SCALE 1X	REV A	DATE 2-10-03	ECN N/A
DATE 7-29-02		PART NO.			
DRAWN N.C.		CHECKED R.A.		MAT'L	
APPROVED <i>Amc 4.11.06</i>			NEXT ASSEMBLY		USED ON
TITLE <b>OUTLINE/INSTALLATION DRAWING MODEL 3184E</b>					DWG NO. <b>127-3184E</b>
					SHEET 1 OF 1

## SPECIFICATIONS

### MODEL 3184E INDUSTRIAL ACCELEROMETER

SPECIFICATION	VALUE	UNITS
<b>PHYSICAL</b>		
WEIGHT	107	GRAMS
SIZE (HEX x HEIGHT)	1.0 x 2.4	INCHES
MOUNTING PROVISION	1/4-28, UNF-2B TAPPED HOLE AT BOTTOM	
CONNECTOR, COAXIAL, TOP MOUNTED	2-PIN MILITARY	10SL-4P
CASE /CONNECTOR MATERIAL	316L STAINLESS STEEL	
ELEMENT STYLE	CERAMIC SHEAR	
<b>PERFORMANCE</b>		
SENSITIVITY +/- 5%	100	mV/G
RANGE F.S. FOR +/- 5 VOLTS OUT	± 50	G's
FREQUENCY RESPONSE, ± 5%	1 (60) to 5,000 (300,000)	Hz (CPM)
FREQUENCY RESPONSE, ± 3db	0.5 (30) to 10,000 (600,000)	Hz (CPM)
MOUNTED RESONANT FREQUENCY, NOM.	25	kHz
EQUIVALENT ELECTRICAL NOISE (RESOLUTION)	.00002	G, RMS
AMPLITUDE NON-LINEARITY (ZERO BASED BEST FIT ST.LINE METHOD)	2.0	% F.S., MAX.
TRANSVERSE SENSITIVITY, MAX.	5	PERCENT
STRAIN SENSITIVITY	.0001	G's PER MICROSTRAIN @ 250/μσ
<b>ENVIRONMENTAL</b>		
MAXIMUM VIBRATION	100	G's, RMS
MAXIMUM SHOCK	3000	G's PEAK
TEMPERATURE RANGE	-60 TO +250	°F
ENVIRONMENTAL SEAL	HERMETIC	
<b>ELECTRICAL</b>		
EXCITATION (COMPLIANCE) VOLTAGE RANGE	+20 to +30	VDC
EXCITATION CURRENT RANGE	2 to 20	mA
OUTPUT IMPEDANCE, NOM.	100	OHMS
OUTPUT BIAS VOLTAGE	11.5 to 13	VDC
DISCHARGE TIME CONSTANT, MIN.	0.5	SEC.
OUTPUT SIGNAL POLARITY FOR ACCELERATION TOWARD TOP	POSITIVE GOING	

#### SUPPLIED ACCESSORIES:

(1) MODEL 6176 1/4-28 STAINLESS STEEL MOUNTING STUD

#### AVAILABLE ACCESSORIES:

MODEL 6194 IMMERSION PROOF™ VITON BOOT FOR USE IN HARSH ENVIRONMENT. COMPLETELY SEALS SENSOR AND CONNECTOR FROM MOISTURE. BOOT PROVIDES TOTAL HERMETIC SEAL FROM 0 TO 5,000 PSI.

MODEL 6406Axx CABLE ASSY, 10SL-4S CONNECTOR TO PIGTAIL, TWO-WIRE CABLE WITH TEFLON™ JACKET.

[1] MEASURED AT 100Hz, 1 g RMS LEVEL BY BACK-TO-BACK COMPARISON PER ISA RP37.2.

[2] EACH UNIT SUPPLIED WITH NIST TRACEABLE CALIBRATION CERTIFICATE